

## Anti-Integrin beta 3 antibody [9H2-3D7-6D4] (STJA0033415)

### GENERAL INFORMATION

Product Type	Primary antibodies
Applications	IHC-P
Host / Source	Mouse
Reactivity	Human

### PRODUCT PROPERTIES

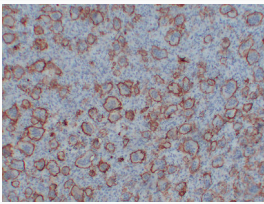
Clonality	Monoclonal
Concentration	1 mg/mL
Conjugation	Unconjugated
Purification	Affinity Chromatography
Dilution Range	IHC 1:100-1:500
Formulation	Liquid in PBS containing 50% glycerol, 0.5% BSA and 0.02% sodium azide, pH 7.3.
Isotype	IgG1
Storage Instruction	Store at 4°C short term. Aliquot and store at -20°C long term. Avoid freeze/thaw cycles.

### TARGET INFORMATION

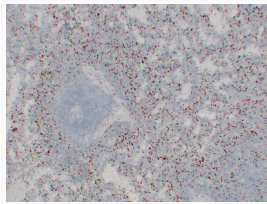
Gene ID	<a href="#">3690</a>
Gene Symbol	<a href="#">ITGB3</a>
UniProt ID	<a href="#">ITB3_HUMAN</a>

### ADDITIONAL INFORMATION

Note **STRICTLY FOR FURTHER SCIENTIFIC RESEARCH USE ONLY (RUO). MUST NOT TO BE USED IN DIAGNOSTIC OR THERAPEUTIC APPLICATIONS.**



Integrin beta 3 antibody immunohistochemistry  
giant cell tumor bone STJA0033415



Integrin beta 3 antibody immunohistochemistry  
paraffin-embedded spleen tissue STJA0033415