

Anti-C Reactive Protein antibody [6D1-A10] (STJA0033257)

GENERAL INFORMATION

Product Type	Primary antibodies
Applications	ELISA
Host / Source	Mouse
Reactivity	Human

PRODUCT PROPERTIES

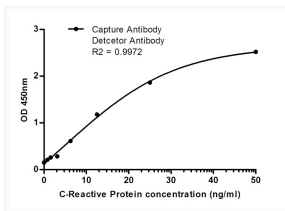
Clonality	Monoclonal
Concentration	3 mg/mL
Conjugation	Unconjugated
Purification	Affinity Purified
Dilution Range	ELISA 1:10000
Formulation	Liquid in PBS containing 50% glycerol, 0.5% BSA and 0.02% sodium azide, pH 7.3.
Isotype	IgG2b
Storage Instruction	Store at 4°C short term. Aliquot and store at -20°C long term. Avoid freeze/thaw cycles.

TARGET INFORMATION

Gene ID	1401
Gene Symbol	CRP
UniProt ID	CRP_HUMAN

ADDITIONAL INFORMATION

Note STRICTLY FOR FURTHER SCIENTIFIC RESEARCH USE ONLY (RUO). MUST NOT TO BE USED IN DIAGNOSTIC OR THERAPEUTIC APPLICATIONS.



C-Reactive Protein antibody sandwich ELISA standard curve 2012786D1 STJA0033257