

## Anti-FABP1 antibody [2D6-F6] (STJA0033254)

### GENERAL INFORMATION

|               |                    |
|---------------|--------------------|
| Product Type  | Primary antibodies |
| Applications  | ELISA              |
| Host / Source | Mouse              |
| Reactivity    | Human              |

### PRODUCT PROPERTIES

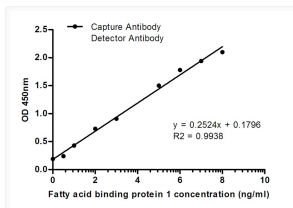
|                     |  |
|---------------------|--|
| Clonality           | Monoclonal   |
| Concentration       | 4.59 mg/mL   |
| Conjugation         | Unconjugated   |
| Purification        | Affinity Purified  |
| Dilution Range      | ELISA 1:10000  |
| Formulation         | Liquid in PBS containing 50% glycerol, 0.5% BSA and 0.02% sodium azide, pH 7.3.          |
| Isotype             | IgG1   |
| Storage Instruction | Store at 4°C short term. Aliquot and store at -20°C long term. Avoid freeze/thaw cycles. |

### TARGET INFORMATION

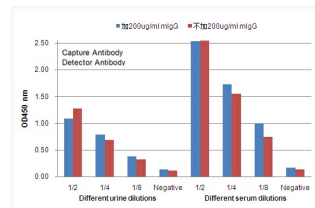
|             |                             |
|-------------|-----------------------------|
| Gene ID     | <a href="#">2168</a>        |
| Gene Symbol | <a href="#">FABP1</a>       |
| UniProt ID  | <a href="#">FABPL_HUMAN</a> |

### ADDITIONAL INFORMATION

Note STRICTLY FOR FURTHER SCIENTIFIC RESEARCH USE ONLY (RUO). MUST NOT TO BE USED IN DIAGNOSTIC OR THERAPEUTIC APPLICATIONS.



LFABP antibody standard curve mouse monoclonal 2D6F6 STJA0033254



LFABP antibody human urine serum samples dilution STJA0033254