

Anti-EGF antibody [5E9-A10-A6] (STJA0033240)

GENERAL INFORMATION

Product Type	Primary antibodies
Applications	ELISA
Host / Source	Mouse
Reactivity	Human

PRODUCT PROPERTIES

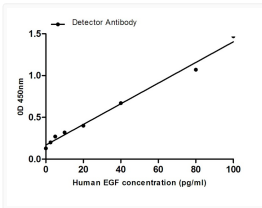
Clonality	Monoclonal
Concentration	2 mg/mL
Conjugation	Unconjugated
Purification	Affinity Purified
Dilution Range	ELISA 1:10000
Formulation	Liquid in PBS containing 50% glycerol, 0.5% BSA and 0.02% sodium azide, pH 7.3.
Isotype	IgG1
Storage Instruction	Store at 4°C short term. Aliquot and store at -20°C long term. Avoid freeze/thaw cycles.

TARGET INFORMATION

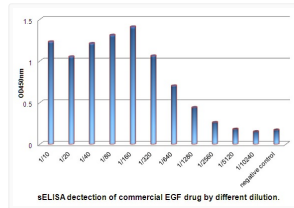
Gene ID	1950
Gene Symbol	EGF
UniProt ID	EGF_HUMAN

ADDITIONAL INFORMATION

Note **STRICTLY FOR FURTHER SCIENTIFIC RESEARCH USE ONLY (RUO). MUST NOT TO BE USED IN DIAGNOSTIC OR THERAPEUTIC APPLICATIONS.**



human EGF antibody sandwich ELISA standard curve 2011655E9 STJA0033240



EGF antibody sELISA commercial drug dilution STJA0033240