

## Anti-beta Tubulin antibody [1E1-E8-H4] {HRP} (STJA0033172)

### GENERAL INFORMATION

Product Type	Primary antibodies
Applications	WB
Host / Source	Mouse
Reactivity	Human/Mouse/Monkey/Hamster/Rat

### PRODUCT PROPERTIES

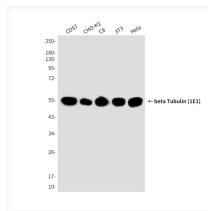
Clonality	Monoclonal
Concentration	0.31 mg/mL
Conjugation	HRP
Purification	Affinity Purified
Dilution Range	WB 1:5000-1:10000
Formulation	Liquid in PBS containing 50% glycerol, 0.5% BSA and 0.02% sodium azide, pH 7.3.
Isotype	IgG1
Storage Instruction	Store at 4°C short term. Aliquot and store at -20°C long term. Avoid freeze/thaw cycles.

### TARGET INFORMATION

Gene ID	<a href="#">203068</a>
Gene Symbol	<a href="#">TUBB</a>
UniProt ID	<a href="#">TBB5_HUMAN</a>

### ADDITIONAL INFORMATION

Note STRICTLY FOR FURTHER SCIENTIFIC RESEARCH USE ONLY (RUO). MUST NOT TO BE USED IN DIAGNOSTIC OR THERAPEUTIC APPLICATIONS.



Tubulin beta antibody western blot HeLa 3T3 C6  
 CHO-K1 COS7 STJA0033172