

## Anti-Acetyl-Alpha Tubulin-Lys40 antibody [6B5-1G7-3F9] (STJA0032979)

### GENERAL INFORMATION

Product Type	Primary antibodies
Applications	WB/IHC-P
Host / Source	Mouse
Reactivity	Human/Rat/Mouse

### PRODUCT PROPERTIES

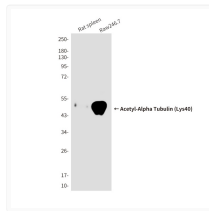
Clonality	Monoclonal
Concentration	1 mg/mL
Conjugation	Unconjugated
Purification	Affinity Purified
Dilution Range	WB 1:500-1:1000 IHC 1:50-1:100
Formulation	Liquid in PBS containing 50% glycerol, 0.5% BSA and 0.02% sodium azide, pH 7.3.
Isotype	IgG1
Storage Instruction	Store at 4°C short term. Aliquot and store at -20°C long term. Avoid freeze/thaw cycles.

### TARGET INFORMATION

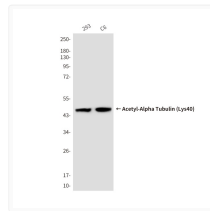
Gene ID	<a href="#">10376</a>
Gene Symbol	<a href="#">TUBA1B</a>
UniProt ID	<a href="#">TBA1B_HUMAN</a>

### ADDITIONAL INFORMATION

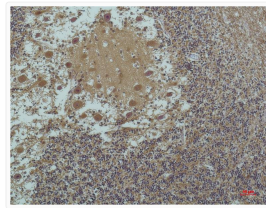
Note STRICTLY FOR FURTHER SCIENTIFIC RESEARCH USE ONLY (RUO). MUST NOT TO BE USED IN DIAGNOSTIC OR THERAPEUTIC APPLICATIONS.



Acetyl-alpha-Tubulin Lys40 antibody western blot rat spleen Raw2647 STJA0032979



Acetyl-alpha-Tubulin Lys40 antibody western blot 293 C6 STJA0032979



-alpha-tubulin Acetyl Lys4 antibody immunohistochemistry human brain STJA0032979