

Anti-p38 antibody [6F5-8A4-6G10] (STJA0032941)

GENERAL INFORMATION

Product Type	Primary antibodies
Applications	IHC-P
Host / Source	Mouse
Reactivity	Human/Rat/Mouse

PRODUCT PROPERTIES

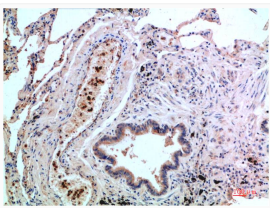
Clonality	Monoclonal
Concentration	1 mg/mL
Conjugation	Unconjugated
Purification	Affinity Purified
Dilution Range	IHC 1:50-1:100
Formulation	Liquid in PBS containing 50% glycerol, 0.5% BSA and 0.02% sodium azide, pH 7.3.
Isotype	IgG1
Storage Instruction	Store at 4°C short term. Aliquot and store at -20°C long term. Avoid freeze/thaw cycles.

TARGET INFORMATION

Gene ID	1432
Gene Symbol	MAPK14
UniProt ID	MK14_HUMAN

ADDITIONAL INFORMATION

Note STRICTLY FOR FURTHER SCIENTIFIC RESEARCH USE ONLY (RUO). MUST NOT TO BE USED IN DIAGNOSTIC OR THERAPEUTIC APPLICATIONS.



p38 antibody immunohistochemistry human lung carcinoma STJA0032941