

## Anti-HP1 gamma antibody [6F7-6A3-2B10] (STJA0032936)

### GENERAL INFORMATION

Product Type	Primary antibodies
Applications	WB/IHC-P
Host / Source	Mouse
Reactivity	Human/Rat/Mouse

### PRODUCT PROPERTIES

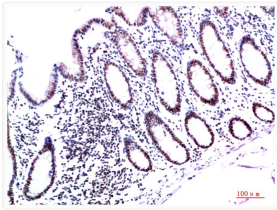
Clonality	Monoclonal
Concentration	1 mg/mL
Conjugation	Unconjugated
Purification	Affinity Purified
Dilution Range	WB 1:500-1:1000 IHC 1:50-1:100
Formulation	Liquid in PBS containing 50% glycerol, 0.5% BSA and 0.02% sodium azide, pH 7.3.
Isotype	IgG1
Storage Instruction	Store at 4°C short term. Aliquot and store at -20°C long term. Avoid freeze/thaw cycles.

### TARGET INFORMATION

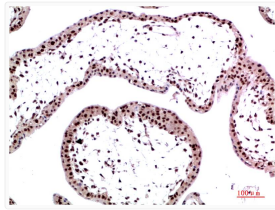
Gene ID	<a href="#">11335</a>
Gene Symbol	<a href="#">CBX3</a>
UniProt ID	<a href="#">CBX3_HUMAN</a>

### ADDITIONAL INFORMATION

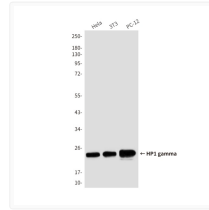
Note STRICTLY FOR FURTHER SCIENTIFIC RESEARCH USE ONLY (RUO). MUST NOT TO BE USED IN DIAGNOSTIC OR THERAPEUTIC APPLICATIONS.



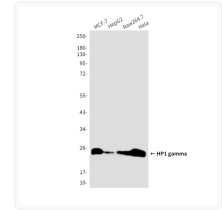
HP1 gamma antibody immunohistochemistry human colon carcinoma STJA0032936



HP1 gamma antibody immunohistochemistry human tonsils STJA0032936



HP1 gamma antibody western blot HeLa 3T3 PC-12 STJA0032936



HP1 gamma antibody western blot MCF-7 HepG2 RAW2647 HeLa STJA0032936