

Anti-Acetyl-Alpha Tubulin-Lys40 antibody [9B8-3C2-4G7] (STJA0032885)

GENERAL INFORMATION

Product Type	Primary antibodies
Applications	WB/IHC-P
Host / Source	Mouse
Reactivity	Human/Rat/Mouse

PRODUCT PROPERTIES

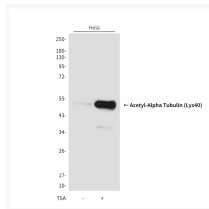
Clonality	Monoclonal
Concentration	1 mg/mL
Conjugation	Unconjugated
Purification	Affinity Purified
Dilution Range	WB 1:500-1:1000 IHC 1:50-1:100
Formulation	Liquid in PBS containing 50% glycerol, 0.5% BSA and 0.02% sodium azide, pH 7.3.
Isotype	IgG1
Storage Instruction	Store at 4°C short term. Aliquot and store at -20°C long term. Avoid freeze/thaw cycles.

TARGET INFORMATION

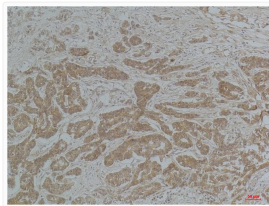
Gene ID	10376
Gene Symbol	TUBA1B
UniProt ID	TBA1B_HUMAN

ADDITIONAL INFORMATION

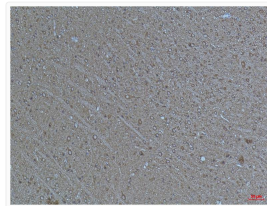
Note STRICTLY FOR FURTHER SCIENTIFIC RESEARCH USE ONLY (RUO). MUST NOT TO BE USED IN DIAGNOSTIC OR THERAPEUTIC APPLICATIONS.



acetyl-alpha tubulin Lys40 antibody western blot
HeLa STJA0032885



alpha-tubulin Acetyl Lys40 antibody
immunohistochemistry human breast carcinoma
STJA0032885



-alpha-tubulin Acetyl Lys40 antibody
immunohistochemistry mouse brain
STJA0032885