

## Anti-Bcl2 antibody [3H5-2H8-1H5] (STJA0032877)

### GENERAL INFORMATION

Product Type	Primary antibodies
Applications	WB/IHC-F/IHC-P/ICC/IF
Host / Source	Mouse
Reactivity	Chicken/Human

### PRODUCT PROPERTIES

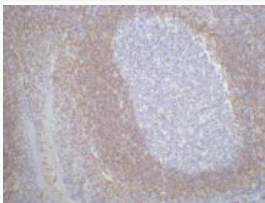
Clonality	Monoclonal
Concentration	1 mg/mL
Conjugation	Unconjugated
Purification	Affinity Purified
Dilution Range	WB 1:500-1:1000 IHC 1:50-1:100 IF 1:50-1:200
Formulation	Liquid in PBS containing 50% glycerol, 0.5% BSA and 0.02% sodium azide, pH 7.3.
Isotype	IgG1
Storage Instruction	Store at 4°C short term. Aliquot and store at -20°C long term. Avoid freeze/thaw cycles.

### TARGET INFORMATION

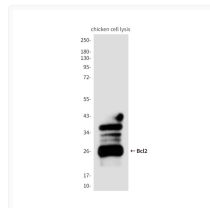
Gene ID	<a href="#">596</a>
Gene Symbol	<a href="#">BCL2</a>
UniProt ID	<a href="#">BCL2_HUMAN</a>

### ADDITIONAL INFORMATION

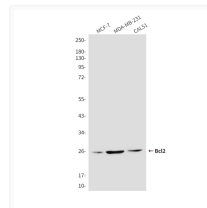
Note STRICTLY FOR FURTHER SCIENTIFIC RESEARCH USE ONLY (RUO). MUST NOT TO BE USED IN DIAGNOSTIC OR THERAPEUTIC APPLICATIONS.



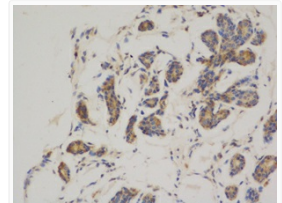
Bcl2 antibody immunohistochemistry human tonsil tissue STJA0032877



Bcl2 3H5 antibody western blot chicken STJA0032877



Bcl2 antibody western blot MCF-7 MDAMB231 Cal51 STJA0032877



Bcl2 antibody immunohistochemistry human breast cancer STJA0032877