

Anti-Cytokeratin 6 antibody [1A5-9F5-6E9] (STJA0032783)

GENERAL INFORMATION

Product Type	Primary antibodies
Applications	WB/IHC-P/ICC/IF
Host / Source	Mouse
Reactivity	Human

PRODUCT PROPERTIES

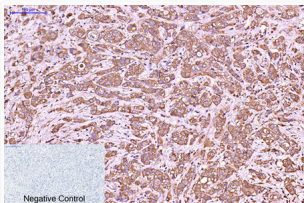
Clonality	Monoclonal
Concentration	1 mg/mL
Conjugation	Unconjugated
Purification	Affinity Purified
Dilution Range	WB 1:500-1:1000 IHC 1:50-1:100 IF 1:50-1:200
Formulation	Liquid in PBS containing 50% glycerol, 0.5% BSA and 0.02% sodium azide, pH 7.3.
Isotype	IgG1
Storage Instruction	Store at 4°C short term. Aliquot and store at -20°C long term. Avoid freeze/thaw cycles.

TARGET INFORMATION

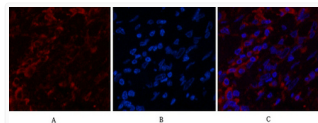
Gene ID	3854 286887 3853 KRT6B KRT6C K2C6B_HUMAN K2C6C_HUMAN K2C6A_HUMAN
---------	---

ADDITIONAL INFORMATION

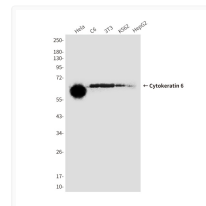
Note STRICTLY FOR FURTHER SCIENTIFIC RESEARCH USE ONLY (RUO). MUST NOT TO BE USED IN DIAGNOSTIC OR THERAPEUTIC APPLICATIONS.



Cytokeratin 6 antibody immunohistochemistry human breast cancer STJA0032783



Cytokeratin 6 antibody immunofluorescence human breast cancer tissue STJA0032783



Cytokeratin 6 antibody western blot HeLa C6 3T3 K562 HepG2 STJA0032783