

## Anti-Human IgG1 antibody [1A4] (STJA0032557)

### GENERAL INFORMATION

Product Type	Primary antibodies
Applications	ELISA
Host / Source	Rat
Reactivity	Human

### PRODUCT PROPERTIES

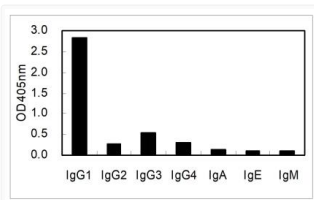
Clonality	Monoclonal
Concentration	1 mg/mL
Conjugation	Unconjugated
Purification	Affinity Purified
Dilution Range	ELISA 1:10000
Formulation	Liquid in PBS containing 0.09% sodium azide as a preservative.
Isotype	IgG2a
Storage Instruction	Store at 4°C short term. Aliquot and store at -20°C long term. Avoid freeze/thaw cycles.

### TARGET INFORMATION

Gene Symbol	<a href="#">IGHG1</a> Uniprot ID= <a href="#">IGHG1_HUMAN</a> "
-------------	---

### ADDITIONAL INFORMATION

Note STRICTLY FOR FURTHER SCIENTIFIC RESEARCH USE ONLY (RUO). MUST NOT TO BE USED IN DIAGNOSTIC OR THERAPEUTIC APPLICATIONS.



antibody ELISA detection STJA0032557