

Anti-PHC1 antibody [8G5-1E6-3G7] (STJA0032548)

GENERAL INFORMATION

Product Type	Primary antibodies
Applications	FC
Host / Source	Mouse
Reactivity	Human

PRODUCT PROPERTIES

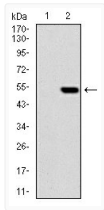
Clonality	Monoclonal
Concentration	1 mg/mL
Conjugation	Unconjugated
Purification	Affinity Purified
Dilution Range	FC 1:100
Formulation	Liquid in PBS containing 50% glycerol, 0.5% BSA and 0.02% sodium azide, pH 7.3.
Isotype	IgG1
Storage Instruction	Store at 4°C short term. Aliquot and store at -20°C long term. Avoid freeze/thaw cycles.

TARGET INFORMATION

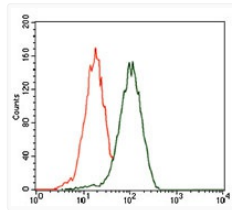
Gene ID	1911
Gene Symbol	PHC1
UniProt ID	PHC1_HUMAN

ADDITIONAL INFORMATION

Note STRICTLY FOR FURTHER SCIENTIFIC RESEARCH USE ONLY (RUO). MUST NOT TO BE USED IN DIAGNOSTIC OR THERAPEUTIC APPLICATIONS.



PHC1 antibody western blot HEK293 STJA0032548



HEK293 PHC1 antibody flow cytometry HEK293 cells STJA0032548