

## Anti-RPS6 antibody [7B10-E11-E11] (STJA0032502)

### GENERAL INFORMATION

Product Type	Primary antibodies
Applications	WB/ICC/IF/IP
Host / Source	Mouse
Reactivity	Human/Mouse/Rat/Monkey

### PRODUCT PROPERTIES

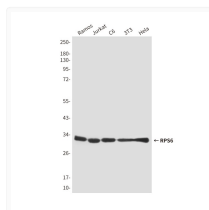
Clonality	Monoclonal
Concentration	2.2 mg/mL
Conjugation	Unconjugated
Purification	Affinity Purified
Dilution Range	WB 1:500-1:1000 IF 1:50-1:200 IP 1:20
Formulation	Liquid in PBS containing 50% glycerol, 0.5% BSA and 0.02% sodium azide, pH 7.3.
Isotype	IgG1
Storage Instruction	Store at 4°C short term. Aliquot and store at -20°C long term. Avoid freeze/thaw cycles.

### TARGET INFORMATION

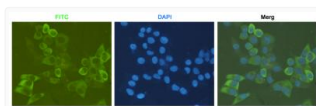
Gene ID	<a href="#">6194</a>
Gene Symbol	<a href="#">RPS6</a>
UniProt ID	<a href="#">RPS6_HUMAN</a>

### ADDITIONAL INFORMATION

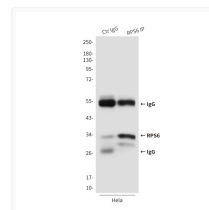
Note STRICTLY FOR FURTHER SCIENTIFIC RESEARCH USE ONLY (RUO). MUST NOT TO BE USED IN DIAGNOSTIC OR THERAPEUTIC APPLICATIONS.



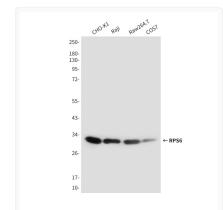
S6 Ribosomal Protein antibody western blot  
Ramos Jurkat C6 3T3 HeLa STJA0032502



RPS6 antibody immunocytochemistry HeLa cells  
STJA0032502



RPS6 antibody immunoprecipitation HeLa lysates  
STJA0032502



RPS6 antibody western blot CHO-K1 Raji  
Raw2647 COS7 STJA0032502