

Anti-Human IgM antibody [3E12-H4-G4] (STJA0032476)

GENERAL INFORMATION

Product Type	Primary antibodies
Applications	ELISA/IHC-P
Host / Source	Mouse
Reactivity	Human

PRODUCT PROPERTIES

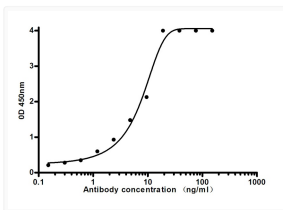
Clonality	Monoclonal
Concentration	8 mg/mL
Conjugation	Unconjugated
Purification	Affinity Purified
Dilution Range	IHC 1:50-1:100 ELISA 1:10000
Formulation	Liquid in PBS containing 50% glycerol, 0.5% BSA and 0.02% sodium azide, pH 7.3.
Isotype	IgG2a
Storage Instruction	Store at 4°C short term. Aliquot and store at -20°C long term. Avoid freeze/thaw cycles.

TARGET INFORMATION

Gene Symbol	IGHM Uniprot ID= IGHM_HUMAN "
-------------	---

ADDITIONAL INFORMATION

Note STRICTLY FOR FURTHER SCIENTIFIC RESEARCH USE ONLY (RUO). MUST NOT TO BE USED IN DIAGNOSTIC OR THERAPEUTIC APPLICATIONS.



Human IgM antibody indirect ELISA mouse
STJA0032476