

Anti-PKM2 antibody [1F2-F4-H11] (STJA0032405)

GENERAL INFORMATION

Product Type	Primary antibodies
Applications	WB/ICC/IF/IP
Host / Source	Mouse
Reactivity	Human/Mouse/Monkey

PRODUCT PROPERTIES

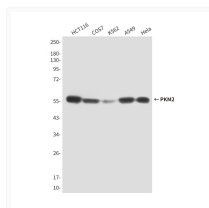
Clonality	Monoclonal
Concentration	1.4 mg/mL
Conjugation	Unconjugated
Purification	Affinity Purified
Dilution Range	WB 1:500-1:1000 IF 1:50-1:200 IP 1:20
Formulation	Liquid in PBS containing 50% glycerol, 0.02% sodium azide, pH 7.4.
Isotype	IgG2b
Storage Instruction	Store at 4°C short term. Aliquot and store at -20°C long term. Avoid freeze/thaw cycles.

TARGET INFORMATION

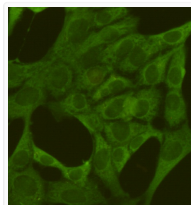
Gene ID	5315
Gene Symbol	PKM
UniProt ID	KPYM_HUMAN

ADDITIONAL INFORMATION

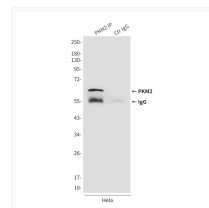
Note **STRICTLY FOR FURTHER SCIENTIFIC RESEARCH USE ONLY (RUO). MUST NOT TO BE USED IN DIAGNOSTIC OR THERAPEUTIC APPLICATIONS.**



PKM2 antibody western blot HCT116 COS7 K562 A549 HeLa STJA0032405



PKM2 antibody immunofluorescence 3T3 cells STJA0032405



PKM2 antibody immunoprecipitation HeLa lysates STJA0032405