

Anti-KDM1A antibody [1E5-H2] (STJA0032339)

GENERAL INFORMATION

Product Type	Primary antibodies
Applications	WB/ICC/IF/IP
Host / Source	Mouse
Reactivity	Human/Monkey

PRODUCT PROPERTIES

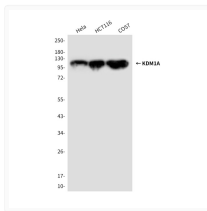
Clonality	Monoclonal
Concentration	2.5 mg/mL
Conjugation	Unconjugated
Purification	Affinity Purified
Dilution Range	WB 1:500-1:1000 IF 1:50-1:200 IP 1:20
Formulation	Liquid in PBS containing 50% glycerol, 0.5% BSA and 0.02% sodium azide, pH 7.3.
Isotype	IgG1
Storage Instruction	Store at 4°C short term. Aliquot and store at -20°C long term. Avoid freeze/thaw cycles.

TARGET INFORMATION

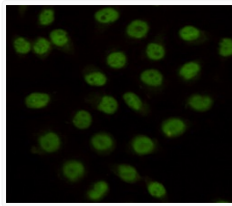
Gene ID	23028
Gene Symbol	KDM1A
UniProt ID	KDM1A_HUMAN

ADDITIONAL INFORMATION

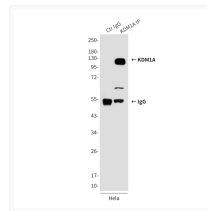
Note STRICTLY FOR FURTHER SCIENTIFIC RESEARCH USE ONLY (RUO). MUST NOT TO BE USED IN DIAGNOSTIC OR THERAPEUTIC APPLICATIONS.



KDM1/LSD1 antibody western blot HeLa HCT116 COS7 STJA0032339



KDM1/LSD1 antibody immunocytochemistry HeLa KDM1A 1E5 STJA0032339



KDM1/LSD1 antibody immunoprecipitation HeLa lysates STJA0032339