

## Anti-ARHGEF2 antibody (956-986 aa) [R03-3D1] (STJA0015176)

### GENERAL INFORMATION

Product Type	Primary antibodies
Applications	WB/ICC/IF/FC
Host / Source	Rabbit
Reactivity	Human/Mouse/Rat

### PRODUCT PROPERTIES

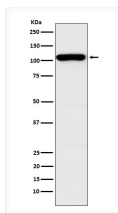
Clonality	Monoclonal
Conjugation	Unconjugated
Purification	Affinity Chromatography
Dilution Range	WB 1:500-1:1000 IF 1:50-1:200 FC 1:50-1:100
Formulation	Liquid in PBS pH7.4, 150mM NaCl, 0.02% Sodium Azide and 50% Glycerol.
Isotype	IgG
Storage Instruction	Store at 4°C short term. Aliquot and store at -20°C long term. Avoid freeze/thaw cycles.

### TARGET INFORMATION

Gene ID	<a href="#">9181</a>
Gene Symbol	<a href="#">ARHGEF2</a>
UniProt ID	<a href="#">ARHG2_HUMAN</a>
Immunogen Region	956-986 aa

### ADDITIONAL INFORMATION

Note STRICTLY FOR FURTHER SCIENTIFIC RESEARCH USE ONLY (RUO). MUST NOT TO BE USED IN DIAGNOSTIC OR THERAPEUTIC APPLICATIONS.



GEF H1 antibody western blot HEK293  
 STJA0015176