

Anti-PLIN1 antibody (475-500 aa) [R08-9B4] (STJA0014403)

GENERAL INFORMATION

| | |
|---------------|--------------------|
| Product Type | Primary antibodies |
| Applications | WB/ICC/IF |
| Host / Source | Rabbit |
| Reactivity | Human/Mouse |

PRODUCT PROPERTIES

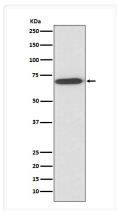
| | |
|---------------------|--|
| Clonality | Monoclonal |
| Conjugation | Unconjugated |
| Purification | Affinity Chromatography |
| Dilution Range | WB 1:500-1:1000 IF 1:50-1:200 |
| Formulation | Liquid in PBS pH7.4, 150mM NaCl, 0.02% Sodium Azide and 50% Glycerol. |
| Isotype | IgG |
| Storage Instruction | Store at 4°C short term. Aliquot and store at -20°C long term. Avoid freeze/thaw cycles. |

TARGET INFORMATION

| | |
|------------------|-----------------------------|
| Gene ID | 5346 |
| Gene Symbol | PLIN1 |
| UniProt ID | PLIN1_HUMAN |
| Immunogen Region | 475-500 aa |

ADDITIONAL INFORMATION

Note STRICTLY FOR FURTHER SCIENTIFIC RESEARCH USE ONLY (RUO). MUST NOT TO BE USED IN DIAGNOSTIC OR THERAPEUTIC APPLICATIONS.



Perilipin 1 antibody western blot human fetal liver
 STJA0014403