

Anti-PREPL antibody (451-651 aa) [R08-8A2] (STJA0012544)

GENERAL INFORMATION

Product Type	Primary antibodies
Applications	WB/IHC-P/IP
Host / Source	Rabbit
Reactivity	Human/Mouse/Rat/Hamster

PRODUCT PROPERTIES

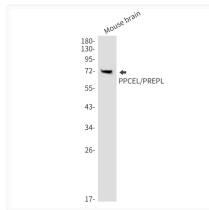
Clonality	Monoclonal
Concentration	0.3 mg/mL
Conjugation	Unconjugated
Purification	Affinity Purified
Dilution Range	WB 1:500-1:1000 IHC 1:50-1:100 IP 1:20
Formulation	50mM Tris-Glycine (pH7.4) , 0.15M NaCl, 40% Glycerol, 0.01% Sodium azide and 0.05% BSA
Isotype	IgG
Storage Instruction	Store at 4°C short term. Aliquot and store at -20°C long term. Avoid freeze/thaw cycles.

TARGET INFORMATION

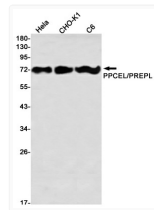
Gene ID	9581
Gene Symbol	PREPL
UniProt ID	PPCEL_HUMAN
Immunogen Region	451-651 aa

ADDITIONAL INFORMATION

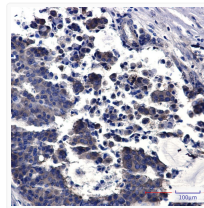
Note STRICTLY FOR FURTHER SCIENTIFIC RESEARCH USE ONLY (RUO). MUST NOT TO BE USED IN DIAGNOSTIC OR THERAPEUTIC APPLICATIONS.



PPCEL antibody western blot mouse brain STJA0012544



PPCEL/PREPL antibody western blot HeLa CHO-K1 C6 STJA0012544



PPCEL/PREPL antibody immunohistochemistry human breast cancer STJA0012544