

## Anti-SCIN antibody (669-682 aa) [R07-6G2] (STJA0011939)

### GENERAL INFORMATION

|               |                    |
|---------------|--------------------|
| Product Type  | Primary antibodies |
| Applications  | WB/IHC-P           |
| Host / Source | Rabbit             |
| Reactivity    | Human              |

### PRODUCT PROPERTIES

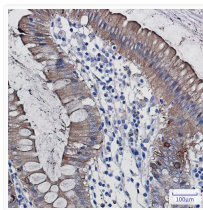
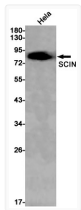
|                     |  |
|---------------------|--|
| Clonality           | Monoclonal   |
| Concentration       | 0.3 mg/mL  |
| Conjugation         | Unconjugated   |
| Purification        | Affinity Purified  |
| Dilution Range      | WB 1:500-1:1000<br>IHC 1:50-1:100  |
| Formulation         | 50mM Tris-Glycine (pH7.4) , 0.15M NaCl, 40% Glycerol, 0.01% Sodium azide and 0.05% BSA   |
| Isotype             | IgG  |
| Storage Instruction | Store at 4°C short term. Aliquot and store at -20°C long term. Avoid freeze/thaw cycles. |

### TARGET INFORMATION

|                  |                            |
|------------------|----------------------------|
| Gene ID          | <a href="#">85477</a>      |
| Gene Symbol      | <a href="#">SCIN</a>       |
| UniProt ID       | <a href="#">SCIN_HUMAN</a> |
| Immunogen Region | 669-682 aa                 |

### ADDITIONAL INFORMATION

Note STRICTLY FOR FURTHER SCIENTIFIC RESEARCH USE ONLY (RUO). MUST NOT TO BE USED IN DIAGNOSTIC OR THERAPEUTIC APPLICATIONS.



SCIN antibody western blot HeLa lysates SCIN antibody immunohistochemistry human colon cancer STJA0011939