

Anti-PPP2CA antibody (277-294 aa) [R04-4G4] (STJA0011815)

GENERAL INFORMATION

Product Type	Primary antibodies
Applications	WB/IHC-F/IHC-P/ICC/IF/IP
Host / Source	Rabbit
Reactivity	Human/Mouse/Rat/Hamster

PRODUCT PROPERTIES

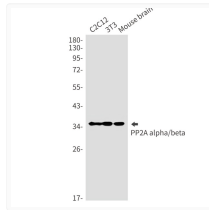
Clonality	Monoclonal
Concentration	0.3 mg/mL
Conjugation	Unconjugated
Purification	Affinity Purified
Dilution Range	WB 1:500-1:1000 IHC 1:50-1:100 IF 1:50-1:200 IP 1:20
Formulation	50mM Tris-Glycine (pH7.4) , 0.15M NaCl, 40% Glycerol, 0.01% Sodium azide and 0.05% BSA
Isotype	IgG
Storage Instruction	Store at 4°C short term. Aliquot and store at -20°C long term. Avoid freeze/thaw cycles.

TARGET INFORMATION

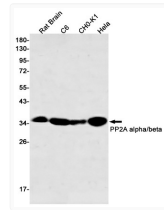
Gene ID	5515
Gene Symbol	PPP2CA
UniProt ID	P22AA_HUMAN
Immunogen Region	277-294 aa

ADDITIONAL INFORMATION

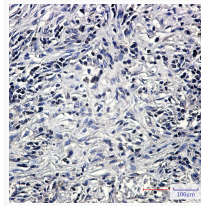
Note STRICTLY FOR FURTHER SCIENTIFIC RESEARCH USE ONLY (RUO). MUST NOT TO BE USED IN DIAGNOSTIC OR THERAPEUTIC APPLICATIONS.



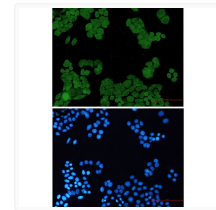
PP2A alpha/beta antibody western blot C2C12 3T3 mouse brain STJA0011815



PP2A alpha/beta antibody western blot rat brain C6 CHO-K1 HeLa STJA0011815



PP2A alpha/beta antibody immunohistochemistry human lung cancer STJA0011815



PP2A alpha/beta antibody immunocytochemistry HeLa cells STJA0011815