

## Anti-OSBPL1A antibody (937-950 aa) [R02-2E2] (STJA0011720)

### GENERAL INFORMATION

Product Type	Primary antibodies
Applications	WB/ICC/IF/IP
Host / Source	Rabbit
Reactivity	Human/Mouse/Rat

### PRODUCT PROPERTIES

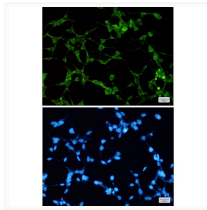
Clonality	Monoclonal
Concentration	0.3 mg/mL
Conjugation	Unconjugated
Purification	Affinity Purified
Dilution Range	WB 1:500-1:1000 IF 1:50-1:200 IP 1:20
Formulation	50mM Tris-Glycine (pH7.4) , 0.15M NaCl, 40% Glycerol, 0.01% Sodium azide and 0.05% BSA
Isotype	IgG
Storage Instruction	Store at 4°C short term. Aliquot and store at -20°C long term. Avoid freeze/thaw cycles.

### TARGET INFORMATION

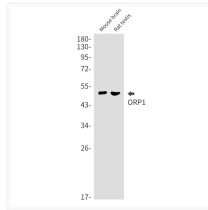
Gene ID	<a href="#">114876</a>
Gene Symbol	<a href="#">OSBPL1A</a>
UniProt ID	<a href="#">OSBL1_HUMAN</a>
Immunogen Region	937-950 aa

### ADDITIONAL INFORMATION

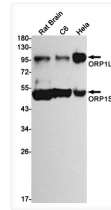
Note **STRICTLY FOR FURTHER SCIENTIFIC RESEARCH USE ONLY (RUO). MUST NOT TO BE USED IN DIAGNOSTIC OR THERAPEUTIC APPLICATIONS.**



ORP1 antibody immunocytochemistry 293T cells  
STJA0011720



ORP1 antibody western blot mouse brain rat testis  
STJA0011720



ORP1 antibody western blot rat brain C6 HeLa  
STJA0011720