

Anti-MARS1 antibody (826-839 aa) [R02-2B7] (STJA0011593)

GENERAL INFORMATION

Product Type	Primary antibodies
Applications	WB/ICC/IF
Host / Source	Rabbit
Reactivity	Human

PRODUCT PROPERTIES

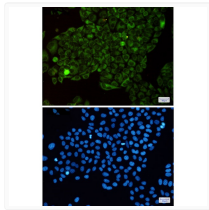
Clonality	Monoclonal
Concentration	0.3 mg/ml
Conjugation	Unconjugated
Purification	Affinity Purified
Dilution Range	WB 1:500-1:1000 IF 1:50-1:200
Formulation	50mM Tris-Glycine (pH7.4) , 0.15M NaCl, 40% Glycerol, 0.01% Sodium azide and 0.05% BSA
Isotype	IgG
Storage Instruction	Store at 4°C short term. Aliquot and store at -20°C long term. Avoid freeze/thaw cycles.

TARGET INFORMATION

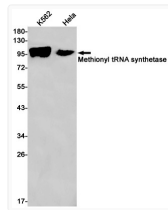
Gene ID	4141
Gene Symbol	MARS1
UniProt ID	SYMC_HUMAN
Immunogen Region	826-839 aa

ADDITIONAL INFORMATION

Note STRICTLY FOR FURTHER SCIENTIFIC RESEARCH USE ONLY (RUO). MUST NOT TO BE USED IN DIAGNOSTIC OR THERAPEUTIC APPLICATIONS.



Immunocytochemistry analysis of Methionyl tRNA synthetase (green) in HeLa using Methionyl tRNA synthetase antibody, and DAPI (blue)



Western blot analysis of Methionyl tRNA synthetase in K562, HeLa lysates using MetRS antibody.