

Anti-CBX5 antibody (176-190 aa) [R09-9D5] (STJA0011448)

GENERAL INFORMATION

Product Type	Primary antibodies
Applications	WB/IHC-F/IHC-P/ICC/IF/IP
Host / Source	Rabbit
Reactivity	Human/Mouse/Rat

PRODUCT PROPERTIES

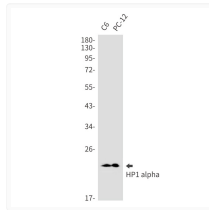
Clonality	Monoclonal
Concentration	0.3 mg/mL
Conjugation	Unconjugated
Purification	Affinity Purified
Dilution Range	WB 1:500-1:1000 IHC 1:50-1:100 IF 1:50-1:200 IP 1:20
Formulation	50mM Tris-Glycine (pH7.4) , 0.15M NaCl, 40% Glycerol, 0.01% Sodium azide and 0.05% BSA
Isotype	IgG
Storage Instruction	Store at 4°C short term. Aliquot and store at -20°C long term. Avoid freeze/thaw cycles.

TARGET INFORMATION

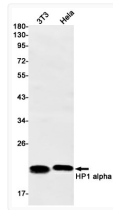
Gene ID	23468
Gene Symbol	CBX5
UniProt ID	CBX5_HUMAN
Immunogen Region	176-190 aa

ADDITIONAL INFORMATION

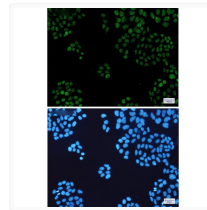
Note STRICTLY FOR FURTHER SCIENTIFIC RESEARCH USE ONLY (RUO). MUST NOT TO BE USED IN DIAGNOSTIC OR THERAPEUTIC APPLICATIONS.



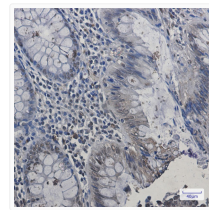
HP1 alpha antibody western blot C6 PC-12
STJA0011448



HP1 alpha antibody western blot 3T3 HeLa
STJA0011448



HP1 alpha antibody immunocytochemistry HeLa cells
STJA0011448



HP1 alpha antibody immunohistochemistry human colon cancer
STJA0011448