

## Anti-Recombinant-Synaptophysin antibody [SR0708] (STJA0010708)

### GENERAL INFORMATION

Product Type	Primary antibodies
Applications	WB/IHC/IF
Host / Source	Rabbit
Reactivity	Mouse/Rat

### PRODUCT PROPERTIES

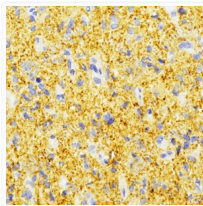
Clonality	Monoclonal
Conjugation	Unconjugated
Purification	Affinity purification
Dilution Range	WB (M, R) 1:500-1:1000 IHC/IF (H, M, R, Mk) 1:500-1:1500
Formulation	PBS with 0.15% ProClin300, 100 Mu g/mL BSA and 50% glycerol.
Isotype	IgG
Storage Instruction	Store at-20C for up to one year, and avoid repeated freeze-thaw cycles.

### TARGET INFORMATION

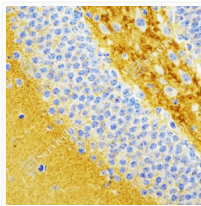
Gene ID	<a href="#">6855</a>
Gene Symbol	<a href="#">SYP</a>
UniProt ID	<a href="#">SYPH_HUMAN</a>

### ADDITIONAL INFORMATION

Note STRICTLY FOR FURTHER SCIENTIFIC RESEARCH USE ONLY (RUO). MUST NOT TO BE USED IN DIAGNOSTIC OR THERAPEUTIC APPLICATIONS.



Immunohistochemistry analysis of Synaptophysin. Sample: Human glioblastoma multiforme, 4% PFA 12-24h. Antigen retrieval: TE buffer, 98C 20min. Primary antibody: 1:500, 4C overnight. Secondary antibody: HRP conjugated Goat Anti-Rabbit IgG, 1:200, RT, 1h.



Immunohistochemistry analysis of Synaptophysin. Sample: mouse brain, 4% PFA 12-24h. Antigen retrieval: TE buffer, 98C 20min. Primary antibody: 1:1000, 4C overnight. Secondary antibody: HRP conjugated Goat Anti-Rabbit IgG, 1:200, RT, 1h.