

Anti-Recombinant-Macrophage Inflammatory Protein 1 alpha/CCL3 antibody [SM0699] (STJA0010699)

GENERAL INFORMATION

Product Type	Primary antibodies
Applications	IHC/IF
Host / Source	Mouse
Reactivity	Mouse

PRODUCT PROPERTIES

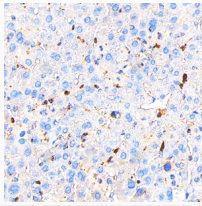
Clonality	Monoclonal
Conjugation	Unconjugated
Purification	Affinity purification
Dilution Range	IHC/IF (M) 1:250-1:1000
Formulation	PBS with 0.15% ProClin300, 100 µg/mL BSA and 50% glycerol.
Isotype	IgG1k
Storage Instruction	Store at-20C for up to one year, and avoid repeated freeze-thaw cycles.

TARGET INFORMATION

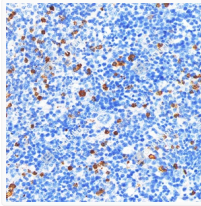
Gene ID	20302
Gene Symbol	Ccl3
UniProt ID	CCL3_MOUSE

ADDITIONAL INFORMATION

Note **STRICTLY FOR FURTHER SCIENTIFIC RESEARCH USE ONLY (RUO). MUST NOT TO BE USED IN DIAGNOSTIC OR THERAPEUTIC APPLICATIONS.**



Immunohistochemistry analysis of Macrophage Inflammatory Protein 1 alpha/CCL3. Sample: mouse Inflammatory model induced by Ips liver, 4% PFA 12-24h. Antigen retrieval: Citrate buffer, pressure cooker 2 min. Primary antibody: 1:500, 4C overnight. Secondary antibody: S-vision poly-HRP conjugated Goat Anti-mouse IgG, Ready to use, RT, 20min.



Immunohistochemistry analysis of Macrophage Inflammatory Protein 1 alpha/CCL3. Sample: mouse spleen, 4% PFA 12-24h. Antigen retrieval: Citrate buffer, pressure cooker 2 min. Primary antibody: 1:500, 4C overnight. Secondary antibody: S-vision poly-HRP conjugated Goat Anti-mouse IgG, Ready to use, RT, 20min.