

Anti-Recombinant-Calbindin antibody [SM0698] (STJA0010698)

GENERAL INFORMATION

Product Type	Primary antibodies
Applications	WB/IHC/IF
Host / Source	Mouse
Reactivity	Mouse/Rat

PRODUCT PROPERTIES

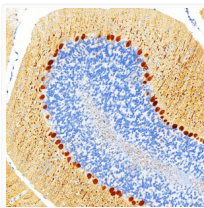
Clonality	Monoclonal
Conjugation	Unconjugated
Purification	Affinity purification
Dilution Range	WB (M, R) 1:500-1:1000 IHC/IF (M, R) 1:250-1:1000
Formulation	PBS with 0.15% ProClin300, 100 Mu g/mL BSA and 50% glycerol.
Isotype	IgG1
Storage Instruction	Store at -20C for up to one year, and avoid repeated freeze-thaw cycles.

TARGET INFORMATION

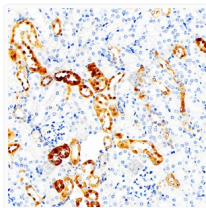
Gene ID	12307
Gene Symbol	Calb1
UniProt ID	CALB1_MOUSE

ADDITIONAL INFORMATION

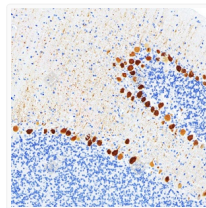
Note **STRICTLY FOR FURTHER SCIENTIFIC RESEARCH USE ONLY (RUO). MUST NOT TO BE USED IN DIAGNOSTIC OR THERAPEUTIC APPLICATIONS.**



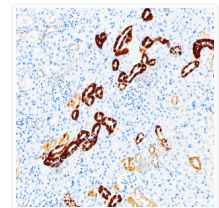
Immunohistochemistry analysis of Calbindin. Sample: mouse cerebellum, 4% PFA 12-24h. Antigen retrieval: Citrate buffer, pressure cooker 2 min. Primary antibody: 1:500, 4C overnight. Secondary antibody: S-vision poly-HRP conjugated Goat Anti-mouse IgG, Ready to use, RT, 20min.



Immunohistochemistry analysis of Calbindin. Sample: mouse kidney, 4% PFA 12-24h. Antigen retrieval: Citrate buffer, pressure cooker 2 min. Primary antibody: 1:500, 4C overnight. Secondary antibody: S-vision poly-HRP conjugated Goat Anti-mouse IgG, Ready to use, RT, 20min.



Immunohistochemistry analysis of Calbindin. Sample: Rat cerebellum, 4% PFA 12-24h. Antigen retrieval: Citrate buffer, pressure cooker 2 min. Primary antibody: 1:500, 4C overnight. Secondary antibody: S-vision poly-HRP conjugated Goat Anti-mouse IgG, Ready to use, RT, 20min.



Immunohistochemistry analysis of Calbindin. Sample: Rat kidney, 4% PFA 12-24h. Antigen retrieval: Citrate buffer, pressure cooker 2 min. Primary antibody: 1:500, 4C overnight. Secondary antibody: S-vision poly-HRP conjugated Goat Anti-mouse IgG, Ready to use, RT, 20min.