

## Anti-Recombinant-Transferrin antibody [SR0697] (STJA0010697)

### GENERAL INFORMATION

Product Type	Primary antibodies
Applications	IHC/IF
Host / Source	Rabbit
Reactivity	Human

### PRODUCT PROPERTIES

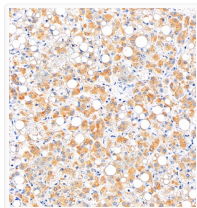
Clonality	Monoclonal
Conjugation	Unconjugated
Purification	Affinity purification
Dilution Range	IHC/IF (H) 1:250-1:1000
Formulation	PBS with 0.15% ProClin300, 100 Mu g/mL BSA and 50% glycerol.
Isotype	IgGk
Storage Instruction	Store at -20C for up to one year, and avoid repeated freeze-thaw cycles.

### TARGET INFORMATION

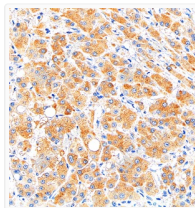
Gene ID	<a href="#">22041</a>
Gene Symbol	<a href="#">Tf</a>
UniProt ID	<a href="#">TRFE_MOUSE</a>

### ADDITIONAL INFORMATION

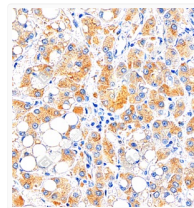
Note **STRICTLY FOR FURTHER SCIENTIFIC RESEARCH USE ONLY (RUO). MUST NOT TO BE USED IN DIAGNOSTIC OR THERAPEUTIC APPLICATIONS.**



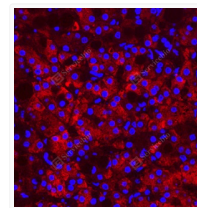
Immunohistochemistry analysis of Transferrin. Sample: Human liver cancer, 4% PFA 12-24h. Antigen retrieval: Citrate buffer, pressure cooker 2 min. Primary antibody: 1:1000, 4C overnight. Secondary antibody: S-vision poly-HRP conjugated Goat Anti-Rabbit IgG, Ready to use, RT, 20min.



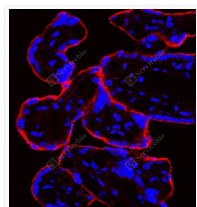
Immunohistochemistry analysis of Transferrin. Sample: Human liver cancer, 4% PFA 12-24h. Antigen retrieval: Citrate buffer, pressure cooker 2 min. Primary antibody: 1:1000, 4C overnight. Secondary antibody: S-vision poly-HRP conjugated Goat Anti-Rabbit IgG, Ready to use, RT, 20min.



Immunohistochemistry analysis of Transferrin. Sample: Human liver cancer, 4% PFA 12-24h. Antigen retrieval: Citrate buffer, pressure cooker 2 min. Primary antibody: 1:1000, 4C overnight. Secondary antibody: S-vision poly-HRP conjugated Goat Anti-Rabbit IgG, Ready to use, RT, 20min.



IF analysis of Transferrin. Sample: Human liver cancer, 4% PFA 12-24h. Blocking buffer: 3% BSA in PBS, RT, 30min. Primary antibody: 1:1000, 4C overnight. Secondary antibody: Cy3 conjugated Goat Anti-Rabbit IgG, 1:300, RT, 1h.



IF analysis of Transferrin. Sample: Human placenta, 4% PFA 12-24h. Blocking buffer: 3% BSA in PBS, RT, 30min. Primary antibody: 1:1000, 4C overnight. Secondary antibody: Cy3 conjugated Goat Anti-Rabbit IgG, 1:300, RT, 1h.