

## Anti-Recombinant-CD163 antibody [SR0659] (STJA0010659)

### GENERAL INFORMATION

Product Type	Primary antibodies
Applications	IHC/IF
Host / Source	Rabbit
Reactivity	Human/Mouse/Rat/Monkey

### PRODUCT PROPERTIES

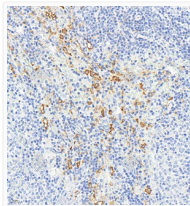
Clonality	Monoclonal
Conjugation	Unconjugated
Purification	Affinity purification
Dilution Range	IHC/IF (H, M, R, Mk) 1:300-1:600
Formulation	PBS with 0.15% ProClin300, 100 Mu g/mL BSA and 50% glycerol.
Isotype	IgG
Storage Instruction	Store at-20C for up to one year, and avoid repeated freeze-thaw cycles.

### TARGET INFORMATION

Gene ID	<a href="#">93671</a>
Gene Symbol	<a href="#">Cd163</a>
UniProt ID	<a href="#">C163A_MOUSE</a>

### ADDITIONAL INFORMATION

Note **STRICTLY FOR FURTHER SCIENTIFIC RESEARCH USE ONLY (RUO). MUST NOT TO BE USED IN DIAGNOSTIC OR THERAPEUTIC APPLICATIONS.**



Immunohistochemistry analysis of CD163. Sample: Rat spleen, 4% PFA 12-24h. Antigen retrieval: Citrate buffer, pressure cooker 2 min. Primary antibody: 1:600, 4C overnight. Secondary antibody: HRP conjugated Goat Anti-Rabbit IgG, 1:200, RT, 1h.