

Anti-Recombinant-Lamin A + Lamin C antibody [SM0637] (STJA0010637)

GENERAL INFORMATION

Product Type	Primary antibodies
Applications	WB/IHC/IF
Host / Source	Mouse
Reactivity	Human/Mouse/Rat

PRODUCT PROPERTIES

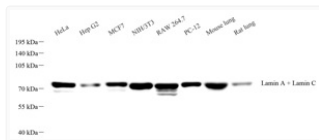
Clonality	Monoclonal
Conjugation	Unconjugated
Purification	Affinity purification
Dilution Range	WB (H, M, R) 1:1000-1:2000 IHC/IF (H, M, R) 1:500-1:2000
Formulation	PBS with 0.15% ProClin300, 100 Mu g/mL BSA and 50% glycerol.
Isotype	IgG1
Storage Instruction	Store at-20C for up to one year, and avoid repeated freeze-thaw cycles.

TARGET INFORMATION

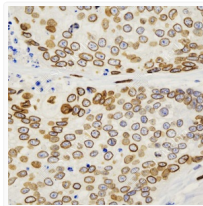
Gene ID	16905
Gene Symbol	Lmna
UniProt ID	LMNA_MOUSE

ADDITIONAL INFORMATION

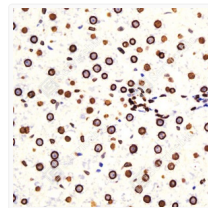
Note STRICTLY FOR FURTHER SCIENTIFIC RESEARCH USE ONLY (RUO). MUST NOT TO BE USED IN DIAGNOSTIC OR THERAPEUTIC APPLICATIONS.



Western blot analysis of Lamin A+ Lamin C. Sample: Protein treated by RIPA Lysis Buffer. Blocking buffer: 3% Nonfat dry milk in TBST, RT, 1h. Primary antibody: 1:2000, 4C overnight. Secondary antibody: HRP conjugated Goat Anti-mouse IgG, 1:3000, RT, 1h.



Immunohistochemistry analysis of Lamin A+ Lamin C. Sample: Human esophageal carcinoma, 4% PFA 12-24h. Antigen retrieval: Citrate buffer, pressure cooker 2min. Primary antibody: 1:1000, 4C overnight. Secondary antibody: HRP conjugated Goat Anti-mouse IgG, 1:200, RT, 1h.



Immunohistochemistry analysis of Lamin A+ Lamin C. Sample: Rat liver, 4% PFA 12-24h. Antigen retrieval: Citrate buffer, pressure cooker 2min. Primary antibody: 1:1000, 4C overnight. Secondary antibody: HRP conjugated Goat Anti-mouse IgG, 1:200, RT, 1h.