

Anti-Recombinant-Cytokeratin 18 antibody [SM0636] (STJA0010636)

GENERAL INFORMATION

Product Type	Primary antibodies
Applications	WB/IHC/IF
Host / Source	Mouse
Reactivity	Human/Mouse/Rat

PRODUCT PROPERTIES

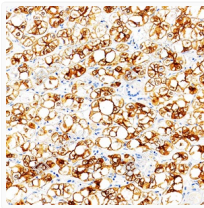
Clonality	Monoclonal
Conjugation	Unconjugated
Purification	Affinity purification
Dilution Range	WB (H, M, R) 1:500-1:1000 IHC/IF (H, M, R) 1:500-1:1000
Formulation	PBS with 0.15% ProClin300, 100 µg/mL BSA and 50% glycerol.
Isotype	IgG1
Storage Instruction	Store at -20C for up to one year, and avoid repeated freeze-thaw cycles.

TARGET INFORMATION

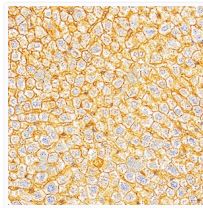
Gene ID	3875
Gene Symbol	KRT18
UniProt ID	K1C18_HUMAN

ADDITIONAL INFORMATION

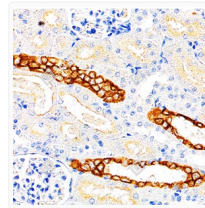
Note **STRICTLY FOR FURTHER SCIENTIFIC RESEARCH USE ONLY (RUO). MUST NOT TO BE USED IN DIAGNOSTIC OR THERAPEUTIC APPLICATIONS.**



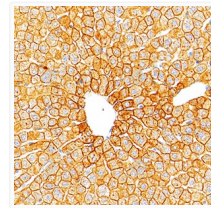
Immunohistochemistry analysis of Cytokeratin 18. Sample: Human liver cancer, 4% PFA 12-24h. Antigen retrieval: Citrate buffer, pressure cooker 2 min. Primary antibody: 1:500, 4C overnight. Secondary antibody: S-vision poly-HRP conjugated Goat Anti-mouse IgG, Ready to use, RT, 20min.



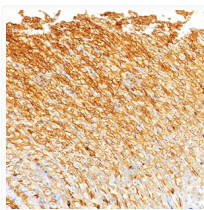
Immunohistochemistry analysis of Cytokeratin 18. Sample: mouse liver, 4% PFA 12-24h. Antigen retrieval: Citrate buffer, pressure cooker 2 min. Primary antibody: 1:500, 4C overnight. Secondary antibody: S-vision poly-HRP conjugated Goat Anti-mouse IgG, Ready to use, RT, 20min.



Immunohistochemistry analysis of Cytokeratin 18. Sample: Rat kidney, 4% PFA 12-24h. Antigen retrieval: Citrate buffer, pressure cooker 2 min. Primary antibody: 1:500, 4C overnight. Secondary antibody: S-vision poly-HRP conjugated Goat Anti-mouse IgG, Ready to use, RT, 20min.



Immunohistochemistry analysis of Cytokeratin 18. Sample: Rat liver, 4% PFA 12-24h. Antigen retrieval: Citrate buffer, pressure cooker 2 min. Primary antibody: 1:500, 4C overnight. Secondary antibody: S-vision poly-HRP conjugated Goat Anti-mouse IgG, Ready to use, RT, 20min.



Immunohistochemistry analysis of Cytokeratin 18. Sample: Rat stomach, 4% PFA 12-24h. Antigen retrieval: Citrate buffer, pressure cooker 2 min. Primary antibody: 1:500, 4C overnight. Secondary antibody: S-vision poly-HRP conjugated Goat Anti-mouse IgG, Ready to use, RT, 20min.