

Anti-Recombinant-Ki67 antibody [SM0580] (STJA0010580)

GENERAL INFORMATION

Product Type	Primary antibodies
Applications	IHC/IF/ICC
Host / Source	Mouse
Reactivity	Human

PRODUCT PROPERTIES

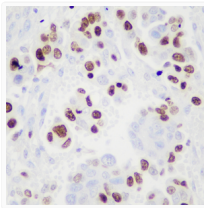
Clonality	Monoclonal
Conjugation	Unconjugated
Purification	Affinity purification
Dilution Range	IHC/IF (H) 1:500-1:1000 ICC/IF (H) 1:200-1:800
Formulation	PBS with 0.15% ProClin300, 100 Mu g/mL BSA and 50% glycerol.
Isotype	IgG
Storage Instruction	Store at-20C for up to one year, and avoid repeated freeze-thaw cycles.

TARGET INFORMATION

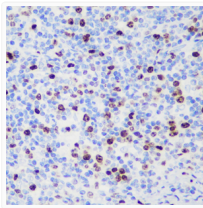
Gene ID	4288
Gene Symbol	MKI67
UniProt ID	KI67_HUMAN

ADDITIONAL INFORMATION

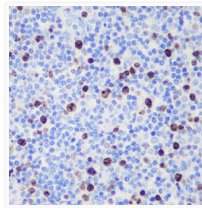
Note STRICTLY FOR FURTHER SCIENTIFIC RESEARCH USE ONLY (RUO). MUST NOT TO BE USED IN DIAGNOSTIC OR THERAPEUTIC APPLICATIONS.



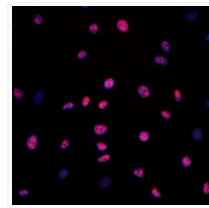
Immunohistochemistry analysis of paraffin embedded human ovarian cancer using ki67 at dilution of 1:500



Immunohistochemistry analysis of paraffin embedded human tonsil using ki67 at dilution of 1:1000



Immunohistochemistry analysis of paraffin embedded human tonsil using ki67 at dilution of 1:500



ICC analysis of Ki67red. Sample: HeLa, 4% PFA 20min. Primary antibody: 1:400, 4C overnight. Secondary antibody: Cy3 conjugated Goat Anti-mouse IgG, 1:300, RT, 1h.