

Anti-Recombinant-Cytokeratin 16/K16 antibody [SR0536] (STJA0010536)

GENERAL INFORMATION

Product Type	Primary antibodies
Applications	IHC/IF
Host / Source	Rabbit
Reactivity	Human

PRODUCT PROPERTIES

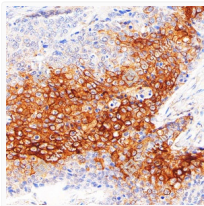
Clonality	Monoclonal
Conjugation	Unconjugated
Purification	Affinity purification
Dilution Range	IHC/IF (H) 1:250-1:1000
Formulation	PBS with 0.15% ProClin300, 100 Mu g/mL BSA and 50% glycerol.
Isotype	IgGk
Storage Instruction	Store at-20C for up to one year, and avoid repeated freeze-thaw cycles.

TARGET INFORMATION

Gene ID	3868
Gene Symbol	KRT16
UniProt ID	K1C16_HUMAN

ADDITIONAL INFORMATION

Note **STRICTLY FOR FURTHER SCIENTIFIC RESEARCH USE ONLY (RUO). MUST NOT TO BE USED IN DIAGNOSTIC OR THERAPEUTIC APPLICATIONS.**



Immunohistochemistry analysis of Cytokeratin 16/K16. Sample: Human lung squamous cell carcinoma, 4% PFA 12-24h. Antigen retrieval: Citrate buffer, pressure cooker 2 min. Primary antibody: 1:1000, 4C overnight. Secondary antibody: S-vision poly-HRP conjugated Goat Anti-Rabbit IgG, Ready to use, RT, 20min.