

Anti-CREB antibody [SM0516] (STJA0010516)

GENERAL INFORMATION

Product Type	Primary antibodies
Applications	WB
Host / Source	Mouse
Reactivity	Human/Mouse/Rat

PRODUCT PROPERTIES

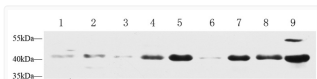
Clonality	Monoclonal
Conjugation	Unconjugated
Purification	Affinity purification
Dilution Range	WB (H, M, R) 1:500-1:1000
Formulation	PBS with 0.02% sodium azide, 100 Mu g/ml BSA and 50% glycerol.
Isotype	IgG
Storage Instruction	Store at -20C for up to one year, and avoid repeated freeze-thaw cycles.

TARGET INFORMATION

Gene ID	1385
Gene Symbol	CREB1
UniProt ID	CREB1_HUMAN

ADDITIONAL INFORMATION

Note **STRICTLY FOR FURTHER SCIENTIFIC RESEARCH USE ONLY (RUO). MUST NOT TO BE USED IN DIAGNOSTIC OR THERAPEUTIC APPLICATIONS.**



Western blot analysis of CREB at dilution of 1:1000. Lane 1: HeLa cell lysate Lane 2: HepG2 cell lysate Lane 3: NIH3T3 cell lysate Lane 4: mouse spleen tissue lysate Lane 5: mouse lung tissue lysate Lane 6: mouse brain tissue lysate Lane 7: Rat spleen tissue lysate Lane 8: Rat lung tissue lysate Lane 9: Rat brain tissue lysate