

Anti-alpha smooth muscle Actin antibody [SM0514] (STJA0010514)

GENERAL INFORMATION

Product Type	Primary antibodies
Applications	WB/IHC/IF
Host / Source	Mouse
Reactivity	Human/Mouse/Rat

PRODUCT PROPERTIES

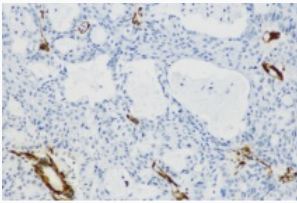
Clonality	Monoclonal
Conjugation	Unconjugated
Purification	Affinity purification
Dilution Range	WB (H, M, R) 1:500-1:2000 IHC/IF (H, M, R, Rabbit) 1:200-1:500/1:200-1:500
Formulation	PBS with 0.02% sodium azide, 100 Mu g/ml BSA and 50% glycerol.
Isotype	IgM
Storage Instruction	Store at -20C for up to one year, and avoid repeated freeze-thaw cycles.

TARGET INFORMATION

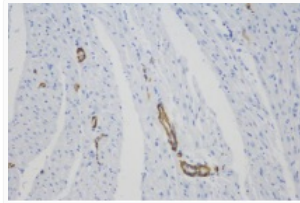
Gene ID	59
Gene Symbol	ACTA2
UniProt ID	ACTA_HUMAN

ADDITIONAL INFORMATION

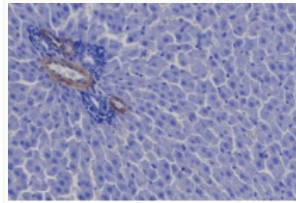
Note STRICTLY FOR FURTHER SCIENTIFIC RESEARCH USE ONLY (RUO). MUST NOT TO BE USED IN DIAGNOSTIC OR THERAPEUTIC APPLICATIONS.



Immunohistochemistry analysis of paraffin-embedded human kidney using Alpha-SMA at dilution of 1:500.



Immunohistochemistry analysis of paraffin-embedded rat heart using Alpha-SMA at dilution of 1:500.



Immunohistochemistry analysis of paraffin-embedded mouse liver using Alpha-SMA at dilution of 1:500.