

Anti-Synaptophysin antibody [SM0506] (STJA0010506)

GENERAL INFORMATION

Product Type	Primary antibodies
Applications	WB/IHC/IF
Host / Source	Mouse
Reactivity	Mouse/Rat

PRODUCT PROPERTIES

Clonality	Monoclonal
Conjugation	Unconjugated
Purification	Affinity purification
Dilution Range	WB (M, R) 1:500-1:1000 IHC/IF (H, M, R) 1:500-1:1500
Formulation	PBS with 0.15% ProClin300, 100 Mu g/mL BSA and 50% glycerol.
Isotype	IgG
Storage Instruction	Store at -20C for up to one year, and avoid repeated freeze-thaw cycles.

TARGET INFORMATION

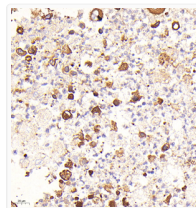
Gene ID	6855
Gene Symbol	SYP
UniProt ID	SYPH_HUMAN

ADDITIONAL INFORMATION

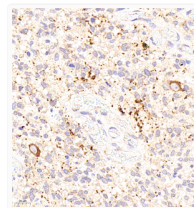
Note STRICTLY FOR FURTHER SCIENTIFIC RESEARCH USE ONLY (RUO). MUST NOT TO BE USED IN DIAGNOSTIC OR THERAPEUTIC APPLICATIONS.



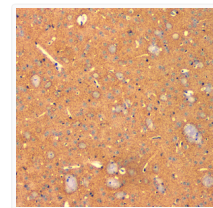
Western blot analysis of synaptophysin-1 at dilution of 1:1000



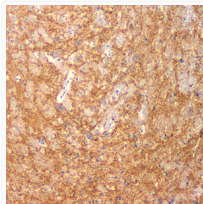
Immunohistochemistry analysis of paraffin embedded human neuroendocrine neoplasms using synaptophysin at dilution of 1:1000



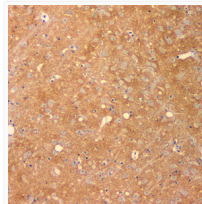
Immunohistochemistry analysis of paraffin embedded human glioblastoma multiforme using synaptophysin at dilution of 1:1000



Immunohistochemistry analysis of paraffin embedded mouse brain using synaptophysin at dilution of 1:1000



Immunohistochemistry analysis of paraffin embedded mouse cerebellum using synaptophysin at dilution of 1:1000



Immunohistochemistry analysis of paraffin embedded rat brain using synaptophysin at dilution of 1:1000