

Anti-Cytokeratin 8 antibody [SM0469] (STJA0010469)

GENERAL INFORMATION

Product Type	Primary antibodies
Applications	WB/IHC/IF
Host / Source	Mouse
Reactivity	Human

PRODUCT PROPERTIES

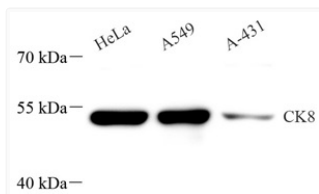
Clonality	Monoclonal
Conjugation	Unconjugated
Purification	Affinity purification
Dilution Range	WB (H) 1:500-1:1000 IHC/IF (H, M, R) 1:1000-1:2000
Formulation	PBS with 0.15% ProClin300, 100 µg/mL BSA and 50% glycerol.
Isotype	IgG1k
Storage Instruction	Store at -20°C for up to one year, and avoid repeated freeze-thaw cycles.

TARGET INFORMATION

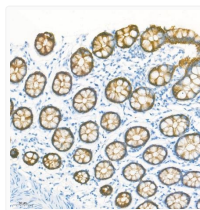
Gene ID	3856
Gene Symbol	KRT8
UniProt ID	K2C8_HUMAN

ADDITIONAL INFORMATION

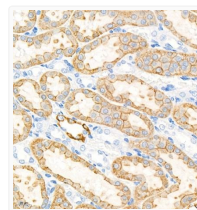
Note STRICTLY FOR FURTHER SCIENTIFIC RESEARCH USE ONLY (RUO). MUST NOT TO BE USED IN DIAGNOSTIC OR THERAPEUTIC APPLICATIONS.



Western blot analysis of CK8 at dilution of 1:1000



Immunohistochemistry analysis of paraffin embedded human colon using CK8 at dilution of 1:2000



Immunohistochemistry analysis of paraffin embedded rat kidney using CK8 at dilution of 1:2000