

Anti-Myelin Basic Protein antibody [SM0466] (STJA0010466)

GENERAL INFORMATION

Product Type	Primary antibodies
Applications	WB/IHC/IF
Host / Source	Mouse
Reactivity	Human/Mouse/Rat

PRODUCT PROPERTIES

Clonality	Monoclonal
Conjugation	Unconjugated
Purification	Affinity purification
Dilution Range	WB (H, M, R) 1:2000-1:4000 IHC/IF (H, M, R, Mk) 1:250-1:1000
Formulation	PBS with 0.02% sodium azide, 100 Mu g/ml BSA and 50% glycerol.
Isotype	IgG
Storage Instruction	Store at -20C for up to one year, and avoid repeated freeze-thaw cycles.

TARGET INFORMATION

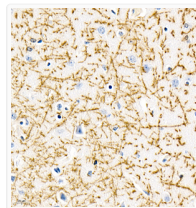
Gene ID	17196
Gene Symbol	Mbp
UniProt ID	MBP_MOUSE

ADDITIONAL INFORMATION

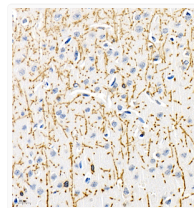
Note STRICTLY FOR FURTHER SCIENTIFIC RESEARCH USE ONLY (RUO). MUST NOT TO BE USED IN DIAGNOSTIC OR THERAPEUTIC APPLICATIONS.



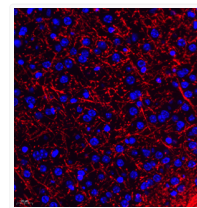
Western blot analysis of Myelin Basic Protein at dilution of 1:2000



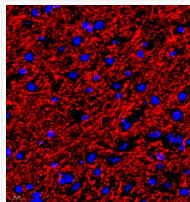
Immunohistochemistry of paraffin embedded mouse brain using MBP at dilution of 1:1000



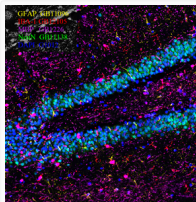
Immunohistochemistry of paraffin embedded Rat brain using MBP at dilution of 1:1000



Immunofluorescence of paraffin embedded mouse brain using MBP at dilution of 1:1000



Immunofluorescence of paraffin embedded Rat brain using MBP at dilution of 1:1000



Immunofluorescence of paraffin embedded Rat hippocampus using Neun + Iba1 + MBP + GFAP at dilution of 1:1500

