

Anti-ZO1 tight junction protein antibody [SM0454] (STJA0010454)

GENERAL INFORMATION

Product Type	Primary antibodies
Applications	IHC/IF
Host / Source	Mouse
Reactivity	Human

PRODUCT PROPERTIES

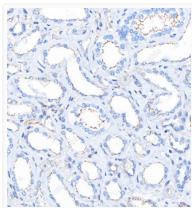
Clonality	Monoclonal
Conjugation	Unconjugated
Purification	Affinity purification
Dilution Range	IHC/IF (H) 1:500-1:1000
Formulation	PBS with 0.15% ProClin300, 100 Mu g/mL BSA and 50% glycerol.
Isotype	IgG1k
Storage Instruction	Store at -20C for up to one year, and avoid repeated freeze-thaw cycles.

TARGET INFORMATION

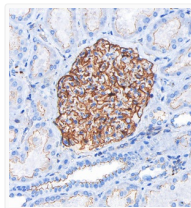
Gene ID	7082
Gene Symbol	TJP1
UniProt ID	ZO1_HUMAN

ADDITIONAL INFORMATION

Note **STRICTLY FOR FURTHER SCIENTIFIC RESEARCH USE ONLY (RUO). MUST NOT TO BE USED IN DIAGNOSTIC OR THERAPEUTIC APPLICATIONS.**



Immunohistochemistry analysis of ZO1 tight junction protein. Sample: Human kidney, 4% PFA 12-24h. Antigen retrieval: Tris-EDTA, pressure cooker 2 min. Primary antibody: 1:1000, 4C overnight. Secondary antibody: S-vision poly-HRP conjugated Goat Anti-mouse IgG, Ready to use, RT, 20min.



Immunohistochemistry analysis of ZO1 tight junction protein. Sample: Human kidney, 4% PFA 12-24h. Antigen retrieval: Tris-EDTA, pressure cooker 2 min. Primary antibody: 1:1000, 4C overnight. Secondary antibody: S-vision poly-HRP conjugated Goat Anti-mouse IgG, Ready to use, RT, 20min.