

Anti-CDX2 antibody [SM0436] (STJA0010436)

GENERAL INFORMATION

Product Type	Primary antibodies
Applications	WB/IHC/IF
Host / Source	Mouse
Reactivity	Human

PRODUCT PROPERTIES

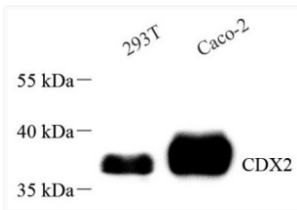
Clonality	Monoclonal
Conjugation	Unconjugated
Purification	Affinity purification
Dilution Range	WB (H) 1:500-1:1000 IHC/IF (H, M, R) 1:1000-1:3000
Formulation	PBS with 0.15% ProClin300, 100 Mu g/mL BSA and 50% glycerol.
Isotype	IgG2ak
Storage Instruction	Store at -20C for up to one year, and avoid repeated freeze-thaw cycles.

TARGET INFORMATION

Gene ID	1045
Gene Symbol	CDX2
UniProt ID	CDX2_HUMAN

ADDITIONAL INFORMATION

Note STRICTLY FOR FURTHER SCIENTIFIC RESEARCH USE ONLY (RUO). MUST NOT TO BE USED IN DIAGNOSTIC OR THERAPEUTIC APPLICATIONS.



Western blot analysis of CDX2 at dilution of 1:1000

