

## Anti-beta III Tubulin antibody [SM0434] (STJA0010434)

### GENERAL INFORMATION

Product Type	Primary antibodies
Applications	WB/ICC/IF
Host / Source	Mouse
Reactivity	Human/Mouse/Rat

### PRODUCT PROPERTIES

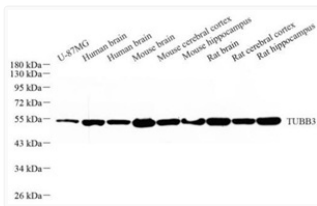
Clonality	Monoclonal
Conjugation	Unconjugated
Purification	Affinity purification
Dilution Range	WB (H, M, R) 1:1000-1:2000 ICC/IF (M) 1:500-1:1000
Formulation	PBS with 0.02% sodium azide, 100 Mu g/ml BSA and 50% glycerol.
Isotype	IgG
Storage Instruction	Store at -20C for up to one year, and avoid repeated freeze-thaw cycles.

### TARGET INFORMATION

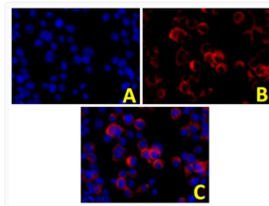
Gene ID	<a href="#">22152</a>
Gene Symbol	<a href="#">Tubb3</a>
UniProt ID	<a href="#">TBB3_MOUSE</a>

### ADDITIONAL INFORMATION

Note STRICTLY FOR FURTHER SCIENTIFIC RESEARCH USE ONLY (RUO). MUST NOT TO BE USED IN DIAGNOSTIC OR THERAPEUTIC APPLICATIONS.



Western blot analysis of Beta-III-Tubulin at dilution of 1:1000



At dilution of 1:1000 A: DAPI nuclear stain B: Anti-Beta 3-tubulin C: Merge