

Anti-Mammaglobin A antibody [SM0414] (STJA0010414)

GENERAL INFORMATION

Product Type	Primary antibodies
Applications	IHC/IF
Host / Source	Mouse
Reactivity	Human

PRODUCT PROPERTIES

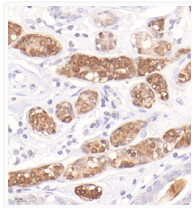
Clonality	Monoclonal
Conjugation	Unconjugated
Purification	Affinity purification
Dilution Range	IHC/IF (H) 1:500-1:1000
Formulation	PBS with 0.15% ProClin300, 100 Mu g/mL BSA and 50% glycerol.
Isotype	IgG2ak
Storage Instruction	Store at -20C for up to one year, and avoid repeated freeze-thaw cycles.

TARGET INFORMATION

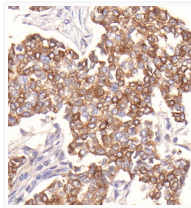
Gene ID	4250
Gene Symbol	SCGB2A2
UniProt ID	SG2A2_HUMAN

ADDITIONAL INFORMATION

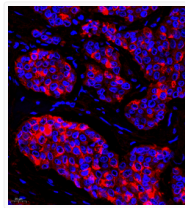
Note STRICTLY FOR FURTHER SCIENTIFIC RESEARCH USE ONLY (RUO). MUST NOT TO BE USED IN DIAGNOSTIC OR THERAPEUTIC APPLICATIONS.



Immunohistochemistry analysis of paraffin embedded human breast cancer tissue using Mammaglobin A at dilution of 1:500



Immunohistochemistry analysis of paraffin embedded human breast cancer tissue using Mammaglobin A at dilution of 1:500



Immunofluorescence analysis of paraffin embedded human breast cancer tissue using Mammaglobin A at dilution of 1:500