

## Anti-METTL3 antibody (N-Term) (STJA0010338)

### GENERAL INFORMATION

|               |                    |
|---------------|--------------------|
| Product Type  | Primary antibodies |
| Applications  | IHC/WB             |
| Host / Source | Rabbit             |
| Reactivity    | Human/Mouse        |

### PRODUCT PROPERTIES

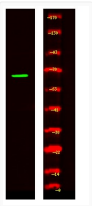
|                     |                                                                                                                       |
|---------------------|-----------------------------------------------------------------------------------------------------------------------|
| Clonality           | Polyclonal                                                                                                            |
| Concentration       | 1 mg/mL                                                                                                               |
| Conjugation         | Unconjugated                                                                                                          |
| Purification        | The antibody was affinity-purified from rabbit antiserum by affinity-chromatography using epitope-specific immunogen. |
| Dilution Range      | WB 1:500-2000<br>IHC 1:50-200                                                                                         |
| Formulation         | Liquid in PBS containing 50% Glycerol and 0.02% Sodium Azide.                                                         |
| Isotype             | IgG                                                                                                                   |
| Molecular Weight    | Calculated: 64kD                                                                                                      |
| Storage Instruction | Store at -20°C for up to 1 year from the date of receipt, and avoid repeat freeze-thaw cycles.                        |

### TARGET INFORMATION

|                  |                                                                  |
|------------------|------------------------------------------------------------------|
| Gene ID          | <a href="#">56339</a>                                            |
| Gene Symbol      | <a href="#">METTL3</a>                                           |
| UniProt ID       | <a href="#">MTA70_HUMAN</a>                                      |
| Immunogen Region | N-Term                                                           |
| Specificity      | This antibody detects endogenous levels of MTA70 at Human, Mouse |

### ADDITIONAL INFORMATION

Note **STRICTLY FOR FURTHER SCIENTIFIC RESEARCH USE ONLY (RUO). MUST NOT TO BE USED IN DIAGNOSTIC OR THERAPEUTIC APPLICATIONS.**



Western Blot analysis of Hela cell lysis, using primary antibody at 1:10000 dilution. Secondary antibody (STJS000791) was diluted at 1:10000