

Anti-Phospho-PFKFB2-Ser466 antibody (STJA0010083)

GENERAL INFORMATION

Product Type	Primary antibodies
Applications	IHC/WB
Host / Source	Rabbit
Reactivity	Human/Mouse/Rat

PRODUCT PROPERTIES

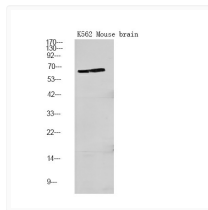
Clonality	Polyclonal
Concentration	1 mg/mL
Conjugation	Unconjugated
Purification	The antibody was affinity-purified from rabbit serum by affinity-chromatography using specific immunogen.
Dilution Range	WB 1:500-2000 IHC 1:50-200
Formulation	Liquid in PBS containing 50% Glycerol and 0.02% Sodium Azide.
Isotype	IgG
Molecular Weight	Observed: 58kD
Storage Instruction	Store at -20°C for up to 1 year from the date of receipt, and avoid repeat freeze-thaw cycles.

TARGET INFORMATION

Gene ID	5208
Gene Symbol	PFKFB2
UniProt ID	F262_HUMAN
Specificity	This antibody detects endogenous levels of PFKFB2 (Phospho Ser466) Rabbit pAb at Human, Mouse, Rat

ADDITIONAL INFORMATION

Note STRICTLY FOR FURTHER SCIENTIFIC RESEARCH USE ONLY (RUO). MUST NOT TO BE USED IN DIAGNOSTIC OR THERAPEUTIC APPLICATIONS.



Western Blot analysis of K562 mouse brain using primary antibody at 1:1000 dilution 4°C, overnight. Secondary antibody (STJS000791) was diluted at 1:10000 25°C, 1.5 hours