

Anti-Phospho-CCNE1-Ser399 antibody (STJA0010041)

GENERAL INFORMATION

Product Type	Primary antibodies
Applications	IHC/WB
Host / Source	Rabbit
Reactivity	Human/Mouse/Rat

PRODUCT PROPERTIES

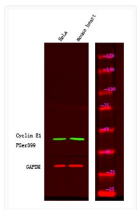
Clonality	Polyclonal
Concentration	1 mg/mL
Conjugation	Unconjugated
Purification	The antibody was affinity-purified from rabbit serum by affinity-chromatography using specific immunogen.
Dilution Range	WB 1:500-2000 IHC 1:50-200
Formulation	Liquid in PBS containing 50% Glycerol and 0.02% Sodium Azide.
Isotype	IgG
Molecular Weight	Observed: 49kD
Storage Instruction	Store at -20°C for up to 1 year from the date of receipt, and avoid repeat freeze-thaw cycles.

TARGET INFORMATION

Gene ID	898
Gene Symbol	CCNE1
UniProt ID	CCNE1_HUMAN
Specificity	This antibody detects endogenous levels of Cyclin E1 (Phospho Ser399) Rabbit pAb at Human, Mouse, Rat

ADDITIONAL INFORMATION

Note **STRICTLY FOR FURTHER SCIENTIFIC RESEARCH USE ONLY (RUO). MUST NOT TO BE USED IN DIAGNOSTIC OR THERAPEUTIC APPLICATIONS.**



Western Blot analysis of HeLa mouse heart using primary antibody at 1:1000 dilution 4°C, overnight. Secondary antibody (STJS000791) was diluted at 1:10000 25°C, 1.5 hours