

Anti-Phospho-ERBB4-Tyr1242 antibody (STJA0010023)

GENERAL INFORMATION

| | |
|---------------|--------------------|
| Product Type | Primary antibodies |
| Applications | IHC/WB |
| Host / Source | Rabbit |
| Reactivity | Human/Mouse/Rat |

PRODUCT PROPERTIES

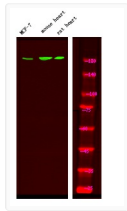
| | |
|---------------------|---|
| Clonality | Polyclonal |
| Concentration | 1 mg/mL |
| Conjugation | Unconjugated |
| Purification | The antibody was affinity-purified from rabbit serum by affinity-chromatography using specific immunogen. |
| Dilution Range | WB 1:500-2000 IHC 1:50-200 |
| Formulation | Liquid in PBS containing 50% Glycerol and 0.02% Sodium Azide. |
| Isotype | IgG |
| Molecular Weight | Observed: 180kD |
| Storage Instruction | Store at -20°C for up to 1 year from the date of receipt, and avoid repeat freeze-thaw cycles. |

TARGET INFORMATION

| | |
|-------------|---|
| Gene ID | 2066 |
| Gene Symbol | ERBB4 |
| UniProt ID | ERBB4_HUMAN |
| Specificity | This antibody detects endogenous levels of HER4 (Phospho Tyr1242) Rabbit pAb at Human, Mouse, Rat |

ADDITIONAL INFORMATION

Note STRICTLY FOR FURTHER SCIENTIFIC RESEARCH USE ONLY (RUO). MUST NOT TO BE USED IN DIAGNOSTIC OR THERAPEUTIC APPLICATIONS.



Western Blot analysis of mouse brain tissue, MCF-7 rat brain tissue using primary antibody at 1:1000 dilution 4°C, overnight. Secondary antibody (STJS000791) was diluted at 1:10000 25°C, 1.5 hours