

## Anti-Phospho-NPM1-Ser70 antibody (STJA0010019)

### GENERAL INFORMATION

Product Type	Primary antibodies
Applications	IHC/WB
Host / Source	Rabbit
Reactivity	Human/Mouse/Rat

### PRODUCT PROPERTIES

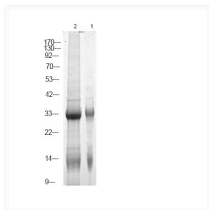
Clonality	Polyclonal
Concentration	1 mg/mL
Conjugation	Unconjugated
Purification	The antibody was affinity-purified from rabbit serum by affinity-chromatography using specific immunogen.
Dilution Range	WB 1:500-2000 IHC 1:50-200
Formulation	Liquid in PBS containing 50% Glycerol and 0.02% Sodium Azide.
Isotype	IgG
Molecular Weight	Observed: 32kD
Storage Instruction	Store at -20°C for up to 1 year from the date of receipt, and avoid repeat freeze-thaw cycles.

### TARGET INFORMATION

Gene ID	<a href="#">4869</a>
Gene Symbol	<a href="#">NPM1</a>
UniProt ID	<a href="#">NPM_HUMAN</a>
Specificity	This antibody detects endogenous levels of NPM (Phospho Ser70) Rabbit pAb at Human, Mouse, Rat

### ADDITIONAL INFORMATION

Note STRICTLY FOR FURTHER SCIENTIFIC RESEARCH USE ONLY (RUO). MUST NOT TO BE USED IN DIAGNOSTIC OR THERAPEUTIC APPLICATIONS.



Western Blot analysis of RAW 264.7 cell, Raji cell, using primary antibody at 1:1000 dilution. Secondary antibody (STJS000791) was diluted at 1:10000