

## Anti-Phospho-FEN1-Ser187 antibody (STJA0009947)

### GENERAL INFORMATION

Product Type	Primary antibodies
Applications	WB
Host / Source	Rabbit
Reactivity	Human/Mouse/Rat

### PRODUCT PROPERTIES

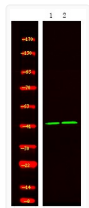
Clonality	Polyclonal
Concentration	1 mg/mL
Conjugation	Unconjugated
Purification	The antibody was affinity-purified from rabbit serum by affinity-chromatography using specific immunogen.
Dilution Range	WB 1:500-2000
Formulation	Liquid in PBS containing 50% Glycerol, 0.5% BSA and 0.02% Sodium Azide.
Isotype	IgG
Molecular Weight	Observed: 42kD
Storage Instruction	Store at -20°C for up to 1 year from the date of receipt, and avoid repeat freeze-thaw cycles.

### TARGET INFORMATION

Gene ID	<a href="#">2237</a>
Gene Symbol	<a href="#">FEN1</a>
UniProt ID	<a href="#">FEN1_HUMAN</a>
Specificity	This antibody detects endogenous levels of Rad2/FEN1 (Phospho-Ser187) at Human, Mouse, Rat

### ADDITIONAL INFORMATION

Note **STRICTLY FOR FURTHER SCIENTIFIC RESEARCH USE ONLY (RUO). MUST NOT TO BE USED IN DIAGNOSTIC OR THERAPEUTIC APPLICATIONS.**



Western Blot analysis of 1HeLa cell, 2 LPS 100ng/mL 30min treated, using primary antibody at 1:1000 dilution. Secondary antibody (STJS000791) was diluted at 1:10000