

## Anti-Phospho-CTBP1-Ser158/164 antibody (STJA0009847)

### GENERAL INFORMATION

|               |                    |
|---------------|--------------------|
| Product Type  | Primary antibodies |
| Applications  | WB/ELISA           |
| Host / Source | Rabbit             |
| Reactivity    | Human/Mouse/Rat    |

### PRODUCT PROPERTIES

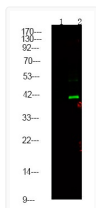
|                     |   |
|---------------------|---|
| Clonality           | Polyclonal  |
| Concentration       | 1 mg/mL   |
| Conjugation         | Unconjugated  |
| Purification        | The antibody was affinity-purified from rabbit serum by affinity-chromatography using specific immunogen. |
| Dilution Range      | WB 1:1000-2000<br>ELISA 1:5000-20000  |
| Formulation         | Liquid in PBS containing 50% Glycerol, 0.5% BSA and 0.02% Sodium Azide.                                   |
| Isotype             | IgG   |
| Molecular Weight    | Observed: 48kD  |
| Storage Instruction | Store at -20°C for up to 1 year from the date of receipt, and avoid repeat freeze-thaw cycles.            |

### TARGET INFORMATION

|             |   |
|-------------|---|
| Gene ID     | <a href="#">1487</a><br><a href="#">1488</a>  |
| Gene Symbol | <a href="#">CTBP1</a><br><a href="#">CTBP2</a>  |
| UniProt ID  | <a href="#">CTBP1_HUMAN</a><br><a href="#">CTBP2_HUMAN</a>                                |
| Specificity | This antibody detects endogenous levels of Human, Mouse, Rat CtBP1/2 (Phospho Ser158/164) |

### ADDITIONAL INFORMATION

Note STRICTLY FOR FURTHER SCIENTIFIC RESEARCH USE ONLY (RUO). MUST NOT TO BE USED IN DIAGNOSTIC OR THERAPEUTIC APPLICATIONS.



Western Blot analysis of 1 HepG2 cell, 2 LPS 100ng/mL 30min treated, using primary antibody at 1:1000 dilution. Secondary antibody (STJS000791) was diluted at 1:10000